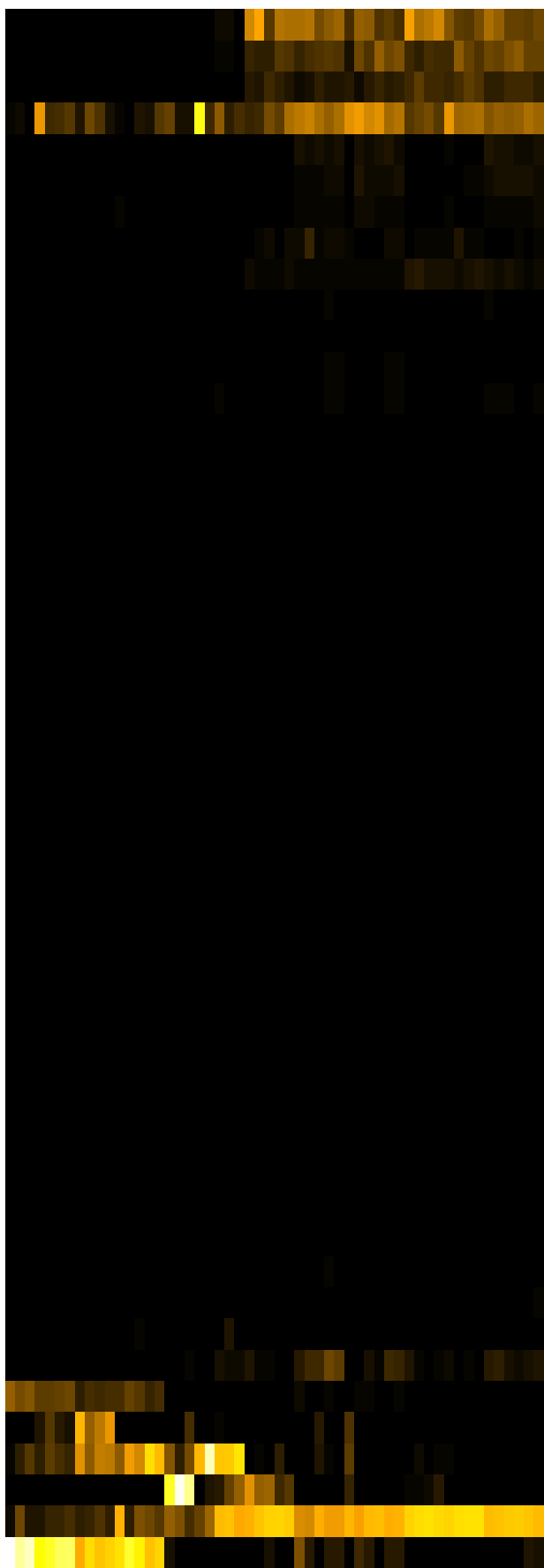
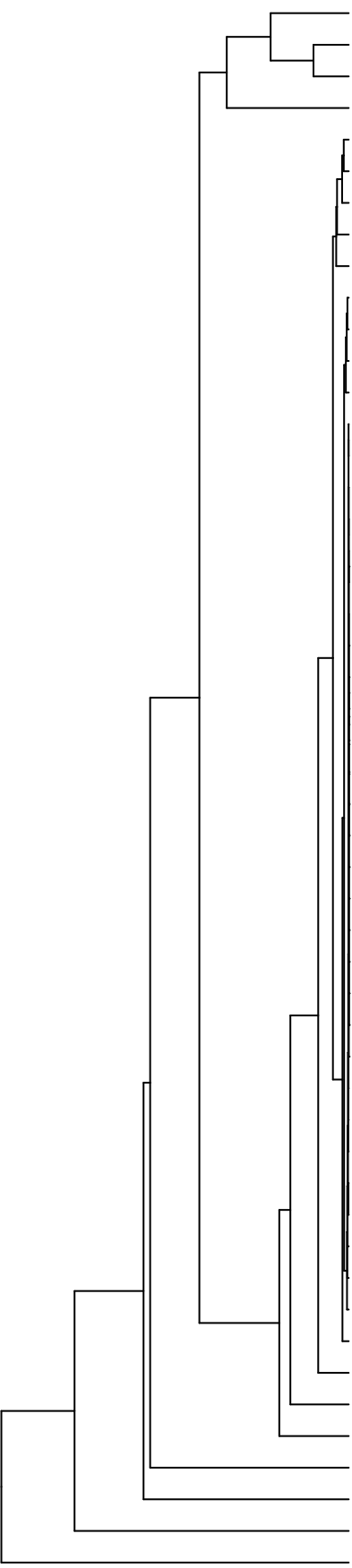


Group006  
 I Final -PMA  
 G Final -PMA



- Veillonella
- Haemophilus
- Granulicatella
- Neisseria
- Aggregatibacter
- Eikenella
- Gemella
- Rothia
- Schaalia
- Porphyromonas
- Prevotella
- Leptotrichia
- Campylobacter
- Lancefieldella
- Lachnoanaerobaculum
- Catonella
- Saccharibacteria\_(TM7)\_[G-6]
- Oribacterium
- Cutibacterium
- Abscorditabacteria\_(SR1)\_[G-1]
- Phyllobacterium
- Acidovorax
- Acinetobacter
- Lachnospiraceae\_[G-2]
- Serratia
- Novosphingobium
- Leifsonia
- Agrobacterium
- Sphingobium
- Riemerella
- Capnocytophaga
- Microbacterium
- Siccationidurans
- Saccharibacteria\_(TM7)\_[G-5]
- Lautropia
- Saccharibacteria\_(TM7)\_[G-1]
- Delftia
- Solobacterium
- Alloprevotella
- Actinomyces
- Stomatobaculum
- Pseudomonas
- Staphylococcus
- Fusobacterium
- Salmonella
- Raoultella
- Klebsiella
- Enterobacter
- Streptococcus
- Citrobacter

- F28914.S460
- F28914.S459
- F28914.S447
- F28914.S463
- F28914.S462
- F28914.S464
- F28914.S443
- F28914.S442
- F28914.S605
- F28914.S698
- F28914.S608
- F28914.S600
- F28914.S302
- F28914.S283
- F28914.S303
- F28914.S137
- F28914.S140
- F28914.S297
- F28914.S141
- F28914.S124
- F28914.S304
- F28914.S287
- F28914.S300
- F28914.S282
- F28914.S144
- F28914.S128
- F28914.S126

Samples

Genus